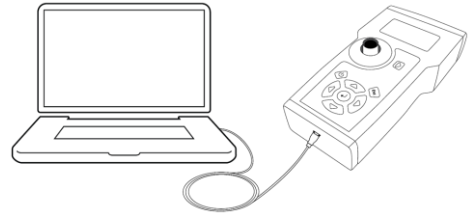


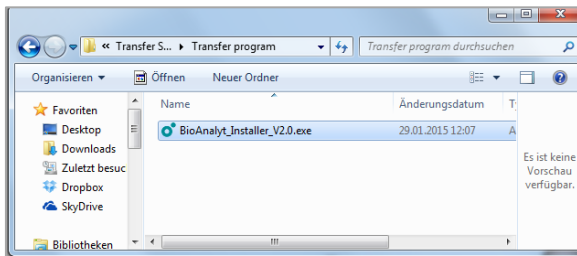


Instructions Transfer Program



Install BioAnalyt Transfer Software on your PC to transfer, store and analyze your measurement data.

NOTE: The software can be installed only on computers with Windows. The earliest version is Windows XP.

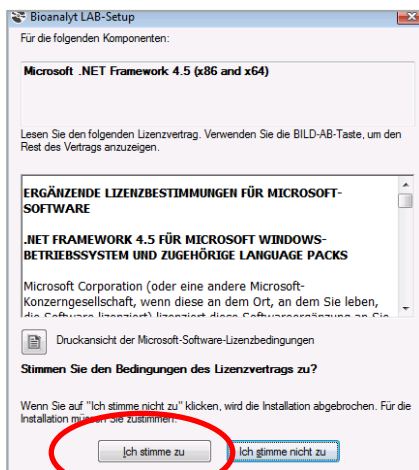


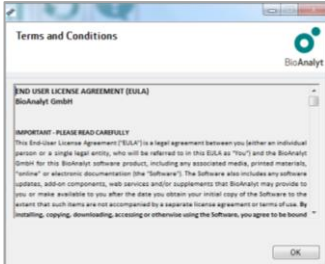
1. Start Software Installation

- Double click on the *BioAnalyt_Installer_Vx.exe*.

2. Accept Microsoft License Agreement

- Click on „Ich Stimme Zu“ to accept Microsoft License agreement for the software installation. The window will appear in German.
- BioAnalytLAB Software requires that you have **Microsoft NET Framework 4.5** installed. If it is not, then the BioAnalytLAB will automatically download the software from internet and install it. In case you are not connected to the internet use the exe file provided with transfer program package.





BioAnalyt
BioAnalyt Lab

Language: English

Organization: _____

Title: Mr.

First Name: _____

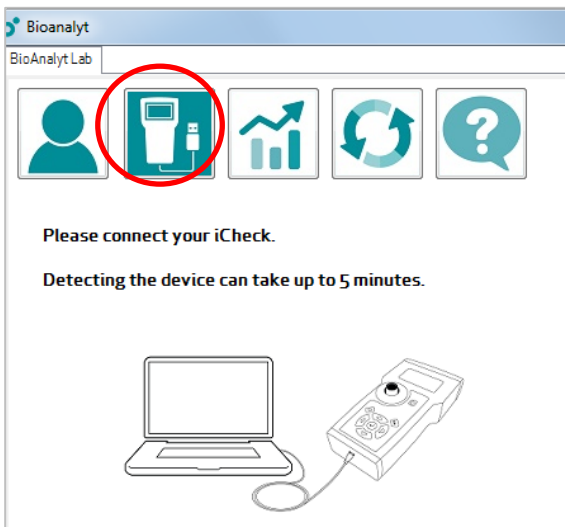
Last Name: _____

email: _____

Country: _____

City: _____

Terms and Conditions Save



3. Launch BioAnalyt LAB

- After software is installed, an icon will appear on your desktop.
- Double click on the BioAnalyt LAB icon on your desktop.

4. Read and accept “Terms and Conditions”

- A window will appear with BioAnalyt Terms and Conditions. Read it and click on „OK“.

5. Enter User Information

- Click on the top left icon.
- Fill out user information in the red-colored fields. Click “Save”.
- You can update this information at any time.

6. Start Software Installation

- Click on the top left icon with iCheck.
- Connect your iCheck to the PC using USB cable.
- Wait few minutes. It may take several minutes for the PC to identify the iCheck.



Bioanalyt
BioAnalyt Lab

Your device is now connected.

Serial No. CR.03030019

iCheck Type Chroma

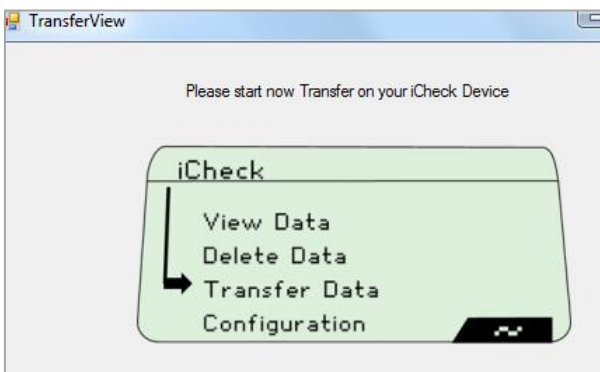
Operator John Smith

Project Name Vitamin A in oil

Start Transfer

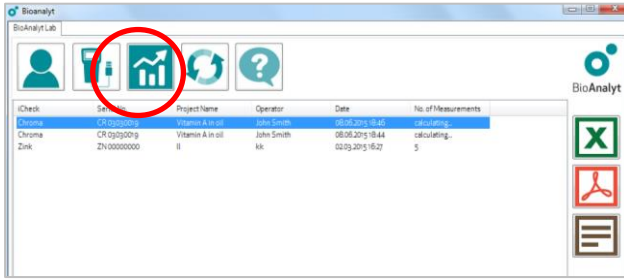
7. Enter iCheck ID

- After you connect iCheck to your PC enter:
 - iCheck device serial No, indicated on the bottom of the device.
 - Name of the Operator
 - Name of the Project
- Your measurement data will be saved together with the above-entered information.
- Click on „Start Transfer“



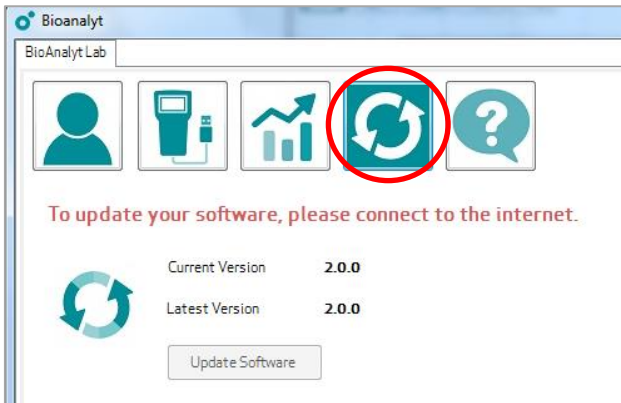
8. Start Data Transfer

- Press Enter key on your iCheck to enter the menu options.
- Go to Transfer Data and press Enter key again.
- All measurement data will now be transferred from iCheck to your PC.



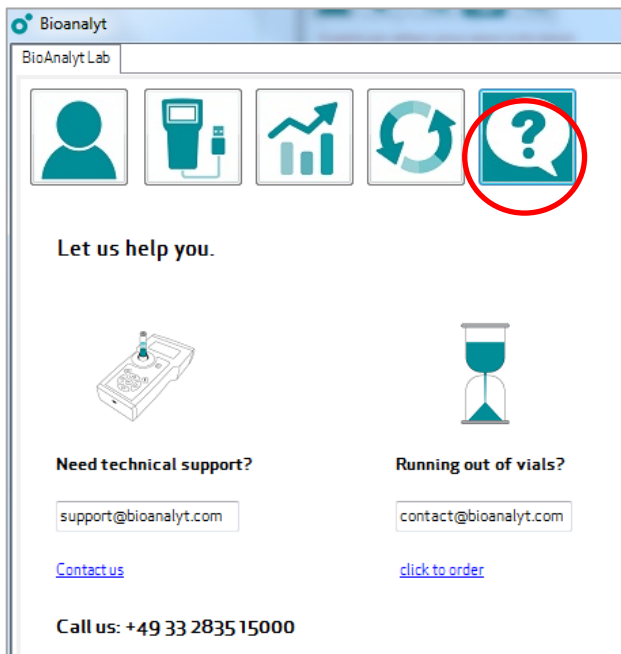
9. View and save your data

- You can view your transferred data sets by clicking on the middle icon.
- To save your data in PDF, XSL, or CSV data format click on the corresponding icon to your right.



10. Update your software

- Click on the Software Update button.
- Connect to the internet.
- If your version differs from the one indicated as "Latest Version" click on Update Software.
- Your software will be automatically updated.



11. Ask for support

- Click on the icon with question mark.
- If you have question related to data transfer or measurement with iCheck send us email to support@bioanalyt.com.
- If you would like to order vials or a new iCheck email us to contact@bioanalyt.com or call at +49 33 2835 15000.



Example of transferred data in Excel Format

	A	B	C	D	E	F	G
1	Vitamin A in oil, John Smith, CHROMA -> CR 03030019 --> 08.06.2015 18:44:12						
2							
3	mode	batch	sample	date	time	result	unit
4	SAMPLE	1	1	05.05.15	15:35:58	22.35	mg RE/kg
5	SAMPLE	1	2	05.05.15	15:38:56	0	mg RE/kg
6	SAMPLE	1	3	05.05.15	15:42:01	15.46	mg RE/kg
7	SAMPLE	1	4	05.05.15	15:45:35	16.37	mg RE/kg
8	SAMPLE	1	5	05.05.15	15:47:43	17.32	mg RE/kg
9	SAMPLE	1	6	05.05.15	15:49:58	17.22	mg RE/kg
10	SAMPLE	1	7	05.05.15	15:52:12	16.35	mg RE/kg



Example of transferred data in PDF Format

asurement.pdf - Adobe Reader
Edit View Window Help
1 / 1 177% Tools

```
Vitamin A in oil, John Smith, CHROMA -> CR 03030019 --> 08.06.2015 18:46:20

mode | batch | sample | date | time | result
SAMPLE | 1 | 1 | 05.05.15 | 15:35:58 | 22.35 mg RE/kg
SAMPLE | 1 | 2 | 05.05.15 | 15:38:56 | 0 mg RE/kg
SAMPLE | 1 | 3 | 05.05.15 | 15:42:01 | 15.46 mg RE/kg
SAMPLE | 1 | 4 | 05.05.15 | 15:45:35 | 16.37 mg RE/kg
SAMPLE | 1 | 5 | 05.05.15 | 15:47:43 | 17.32 mg RE/kg
SAMPLE | 1 | 6 | 05.05.15 | 15:49:58 | 17.22 mg RE/kg
SAMPLE | 1 | 7 | 05.05.15 | 15:52:12 | 16.35 mg RE/kg
SAMPLE | 1 | 8 | 05.05.15 | 15:53:55 | 19.84 mg RE/kg
SAMPLE | 1 | 9 | 05.05.15 | 15:55:59 | 19.74 mg RE/kg
SAMPLE | 1 | 10 | 05.05.15 | 15:57:43 | 18.18 mg RE/kg
```



Example of transferred data in CSV Format

	A	B	C	D	E	F	G
1	Vitamin A in oil, John Smith, CHROMA -> CR 03030019 --> 08.06.2015 18:46:20						
2	mode	batch	sample	date	time	result	unit
3	SAMPLE	1	1	05.05.2015	15:35:58	22.35	mg RE/kg
4	SAMPLE	1	2	05.05.2015	15:38:56	0	mg RE/kg
5	SAMPLE	1	3	05.05.2015	15:42:01	15.46	mg RE/kg
6	SAMPLE	1	4	05.05.2015	15:45:35	16.37	mg RE/kg
7	SAMPLE	1	5	05.05.2015	15:47:43	17.32	mg RE/kg
8	SAMPLE	1	6	05.05.2015	15:49:58	17.22	mg RE/kg
9	SAMPLE	1	7	05.05.2015	15:52:12	16.35	mg RE/kg
10	SAMPLE	1	8	05.05.2015	15:53:55	19.84	mg RE/kg